

# GEMALTO EHS6T-USB

## QUICK STARTUP GUIDE

### REVISION HISTORY

Rev.	Date	Edited by	Approved by
05	02 Sep 2016	Leonardo Ortolani	Alessio Colombo
04	25 Mar 2016	Alessio Colombo	Francesco Casazza
03	15 Feb 2016	Alessio Colombo	Francesco Casazza
02	11 Feb 2016	Alessio Colombo	Francesco Casazza
01	02 Feb 2016	Alessio Colombo	Francesco Casazza

## SUMMARY

<b>1</b>	<b>PACKING LIST DETAILS .....</b>	<b>3</b>
<b>2</b>	<b>DOCUMENTATION .....</b>	<b>3</b>
<b>3</b>	<b>DRIVERS.....</b>	<b>3</b>
<b>4</b>	<b>MODEM INTERFACE DESCRIPTION .....</b>	<b>4</b>
<b>5</b>	<b>PREPARE MODEM.....</b>	<b>5</b>
5.1	PLUG IN THE SIM CARD.....	5
5.2	CONNECT THE ANTENNA .....	5
5.3	CONNECT MODEM TO THE PC.....	5
5.4	CONNECT POWER SUPPLY .....	6
5.5	POWER ON THE MODEM.....	6
5.6	DRIVERS INSTALLATION (ONLY IF REQUEST) .....	7
<b>6</b>	<b>CONFIGURE SMSSERVER .....</b>	<b>11</b>
6.1	ENABLE VERBOSE WINDOW .....	11
6.2	ENABLE SMS DELIVERY .....	12
6.3	SERIAL PORT SETTINGS – USING USB CABLE .....	13
6.4	SERIAL PORT SETTINGS – USING RS232 CABLE.....	14
6.5	CHECK MODEM STATUS.....	15
6.6	SEND TEST SMS.....	17
6.7	RECEIVE TEST SMS .....	19
<b>7</b>	<b>IN CASE OF PROBLEMS.....</b>	<b>20</b>

Rev.	Date	Edited by	Approved by
05	02 Sep 2016	Leonardo Ortolani	Alessio Colombo

## 1 PACKING LIST DETAILS

The package contains following materials:

- Nr. 1 GEMALTO EHS6T-USB Modem;
- Nr. 1 AC/DC Adapter with Schuko plug;
- Nr. 1 250cm cable length Antenna (male connector);
- Nr. 1 200cm length USB cable.



**SIM Card is not included in the package and has to be purchased separately by the Customer.**

## 2 DOCUMENTATION

For a detailed description of the modem you received, refer to the official Gemalto Documentation available on SMSServer download section:

- EHS6T-USB Datasheet;
- EHS6T-USB Hardware Interface Description.

On these documents, you will find standards achievements, detailed technical information and detailed mechanical information.

*For a quick start, it is possible to follow steps detailed in the next chapters.*

## 3 DRIVERS

**On older Windows versions**, in order to use the USB Cable it is necessary to install some drivers. You can find the driver package on SMSServer download section.

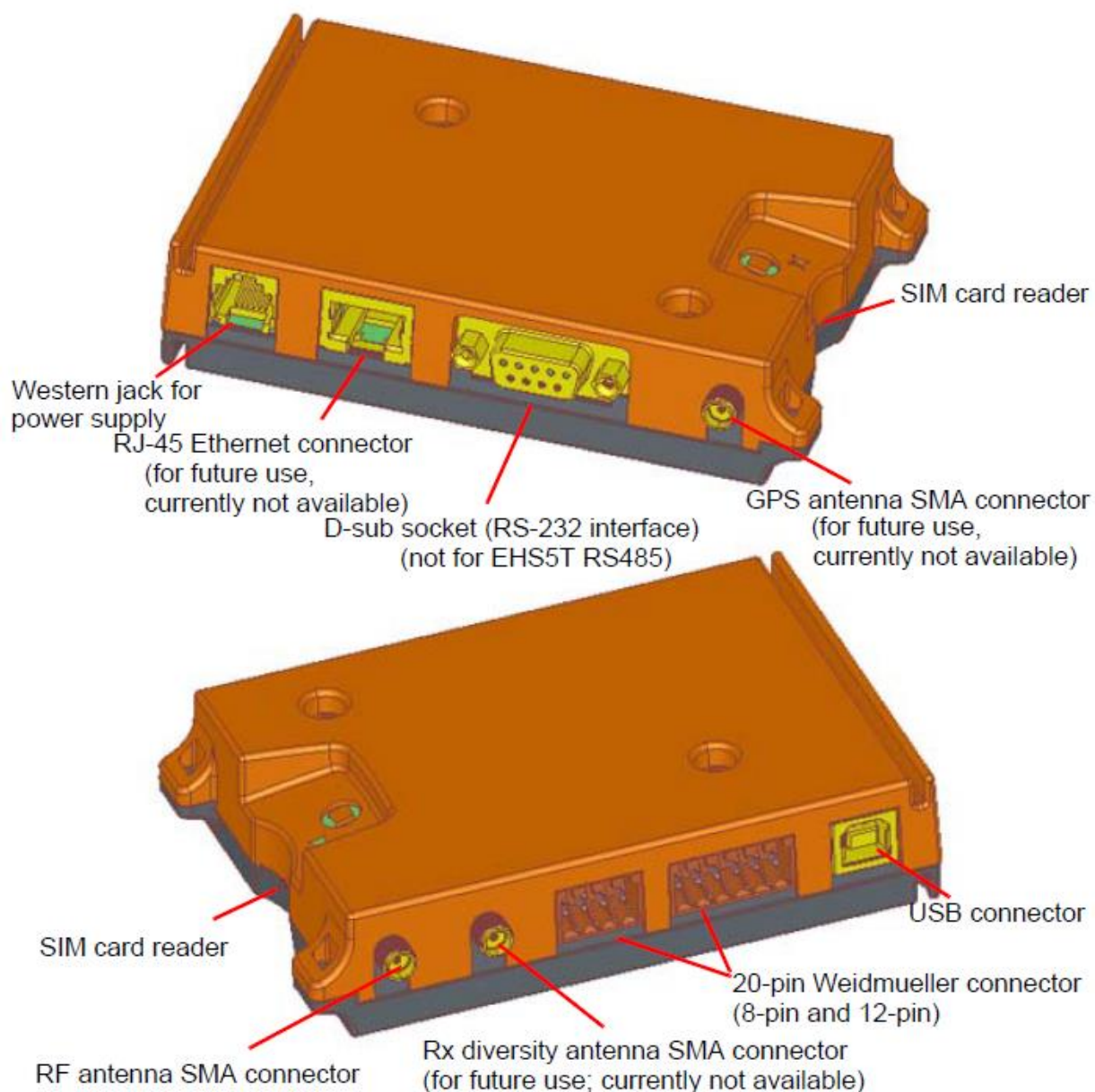
Otherwise, **it is possible to use the RS-232 interface** of the modem as specified on chapter 7.



**Serial Cable is not included in the package and has to be eventually purchased separately by the Customer.**

Rev.	Date	Edited by	Approved by
05	02 Sep 2016	Leonardo Ortolani	Alessio Colombo

## 4 MODEM INTERFACE DESCRIPTION



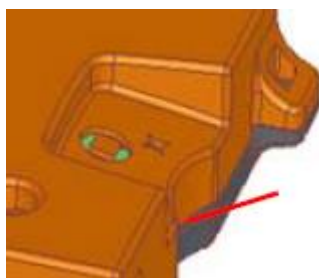
Rev.	Date	Edited by	Approved by
05	02 Sep 2016	Leonardo Ortolani	Alessio Colombo

## 5 PREPARE MODEM

In order to use your new modem, four steps are necessary:

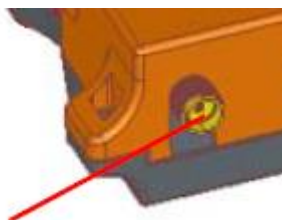
### 5.1 PLUG IN THE SIM CARD

Plug in the SIM Card in the direction shown under the modem (on the grey side). The SIM - with the circuit side facing upwards - is inserted by gently pushing it into the SIM cardholder until it snaps hold. It is now protected from accidental removal. The SIM can be removed from the cardholder by using a flat object such as a screwdriver to press the inserted SIM carefully until it snaps out again.



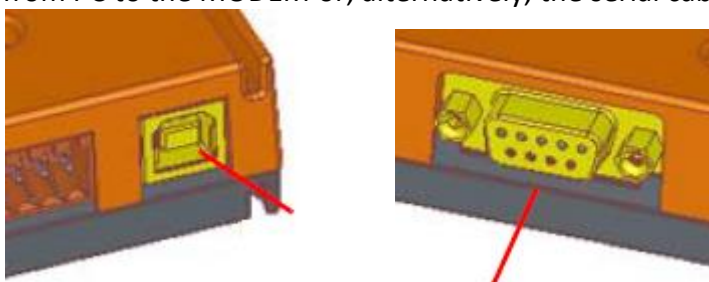
### 5.2 CONNECT THE ANTENNA

Connect the antenna. Please note that the terminal should be installed and operated with a minimum distance of 20cm between the antenna connected to the terminal and any human bodies. In addition, the transmitter must not be co-located or operating in conjunction with any other antenna or transmitter.



### 5.3 CONNECT MODEM TO THE PC

Connect USB Cable from PC to the MODEM or, alternatively, the serial cable (not included).



Rev.	Date	Edited by	Approved by
05	02 Sep 2016	Leonardo Ortolani	Alessio Colombo

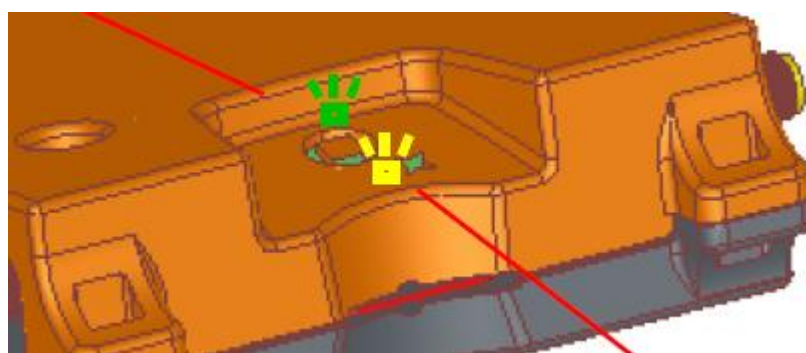
## 5.4 CONNECT POWER SUPPLY

Connect Power Supply to the modem and power it on. A plug converter may be needed in order to use the received Power Supply.



## 5.5 POWER ON THE MODEM

When these steps have been performed, the modem will automatically startup and will try to register to the network using the installed SIM Card. Modem status is represented by the meanings of two LEDs visible through the semitransparent casing.

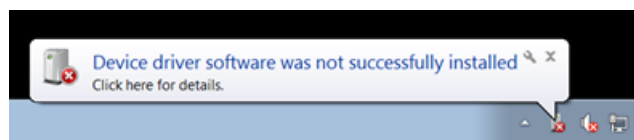


- A green LED indicates whether the modem is ready to operate;
- A yellow LED indicates the network registration state of the SIM following this cases:
  - LED Flashing ON/OFF each 1s: Registration phase in progress. If this phase lasts for more than 1 minute, there can be a SIM related problem;
  - LED OFF and rapid flash each 5 seconds: SIM registration completed.


Rev.	Date	Edited by	Approved by
05	02 Sep 2016	Leonardo Ortolani	Alessio Colombo






## 5.6 DRIVERS INSTALLATION (ONLY IF REQUEST)

After the modem connection to the PC, if the drivers are not installed automatically, will be shown the message as in the screenshot. Then we have to proceed manually.



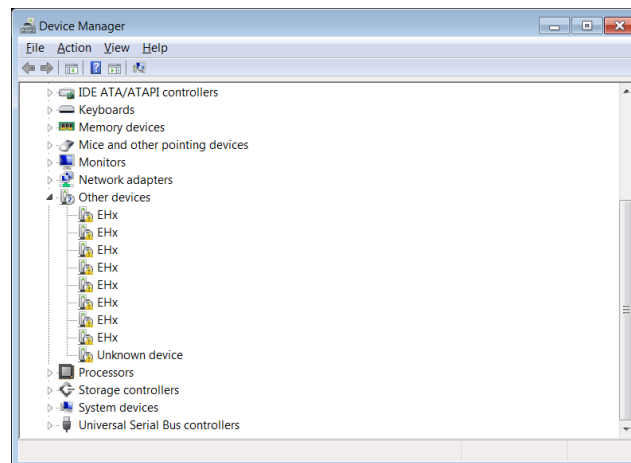
Download the USB Gemalto Modem drivers in the [SMSServer web site download section](#). Click on the Download link and extract the zip file in a new folder.

**Gemalto EHS6T - 3G Worldwide**


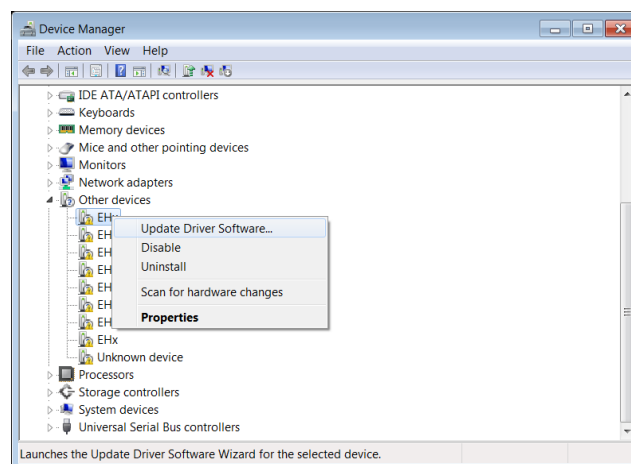
<b>Gemalto EHS6T Brochure</b>  Gemalto EHS6T Brochure.pdf <b>Hot</b>	<a href="#">Details</a> <a href="#">Download</a>
<b>Gemalto EHS6T Quick startup guide (English Version)</b>  [EN] Gemalto EHS6T-USB QuickStart Guide.pdf <b>Hot</b>	<a href="#">Details</a> <a href="#">Download</a>
<b>Gemalto EHS6T Quick startup guide (Versione italiana)</b>  [IT] Gemalto EHS6T-USB QuickStart Guide.pdf	<a href="#">Details</a> <a href="#">Download</a>
<b>Gemalto EHS6T User Manual</b>  Gemalto EHS6T User Manual.pdf <b>Hot</b>	<a href="#">Details</a> <a href="#">Download</a>
<b>USB Driver for older Windows versions</b>  USB Driver for older Windows versions.zip <b>Hot</b>	<a href="#">Details</a> <a href="#">Download</a>

Rev.	Date	Edited by	Approved by
05	02 Sep 2016	Leonardo Ortolani	Alessio Colombo

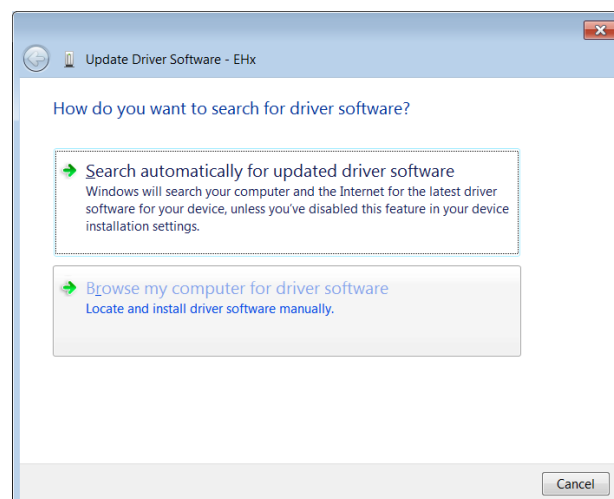
From the **Control Panel**, open the **Device Manager**, in the section *other device* are shown unrecognized device.



Click with the mouse right button on one of the devices and do the **Update Driver Software**:



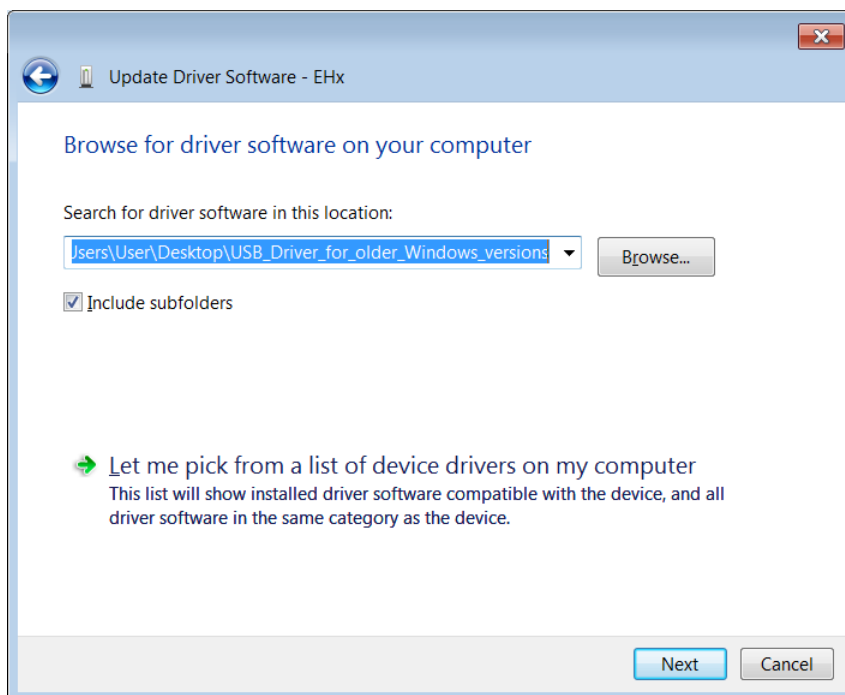
The follow window will appear, choose **Browser my computer for driver software**.



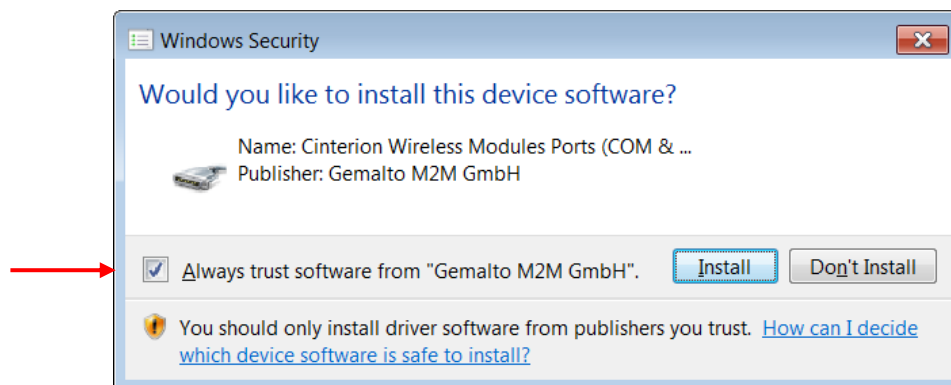
Rev.	Date	Edited by	Approved by
05	02 Sep 2016	Leonardo Ortolani	Alessio Colombo



Then browse the Drivers Folder and press the *next* button. Verify that the item ***Include subfolders*** is enabled.



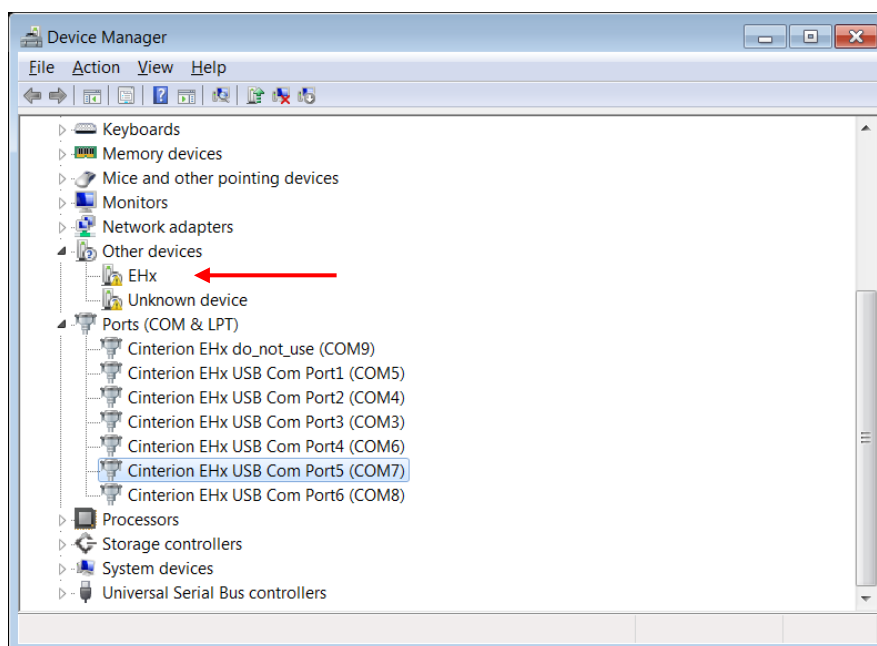
To the next popup select the voice ***Always trust software from "Gemalto M2M GmbH"*** and then ***Install***.



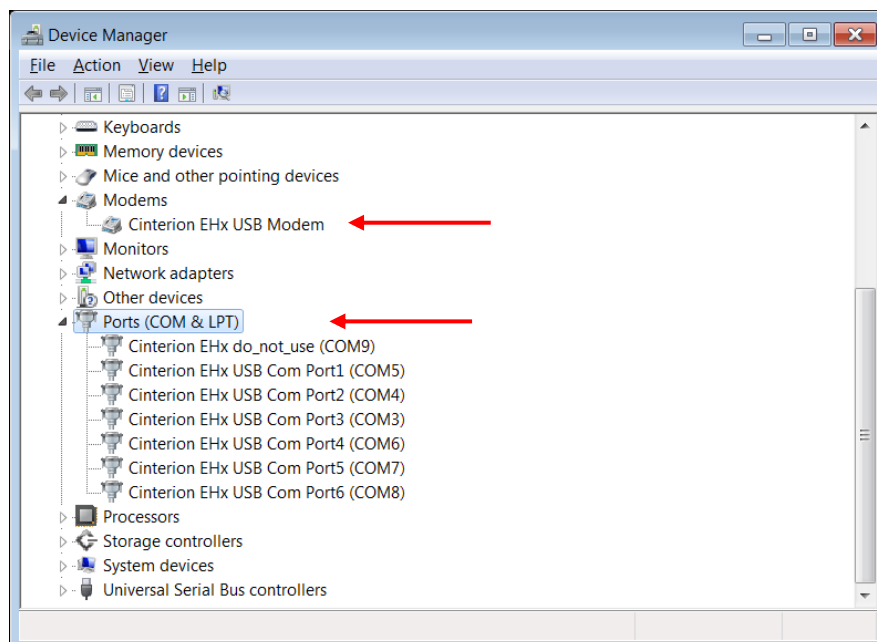
After the installation of the first device, go to ***Device manager, Action → Scan for hardware changes***.

All the installed ports will be appear into the item ***Ports(COM&LTP)***. At the item ***"other devices"*** there is still a port (EHx).

Rev.	Date	Edited by	Approved by
05	02 Sep 2016	Leonardo Ortolani	Alessio Colombo



In that case repeat the update drivers following the steps explained previously. At the end you must have 7 COM ports and a new Modem (Cinetrion EHx USB Modem).



Rev.	Date	Edited by	Approved by
05	02 Sep 2016	Leonardo Ortolani	Alessio Colombo

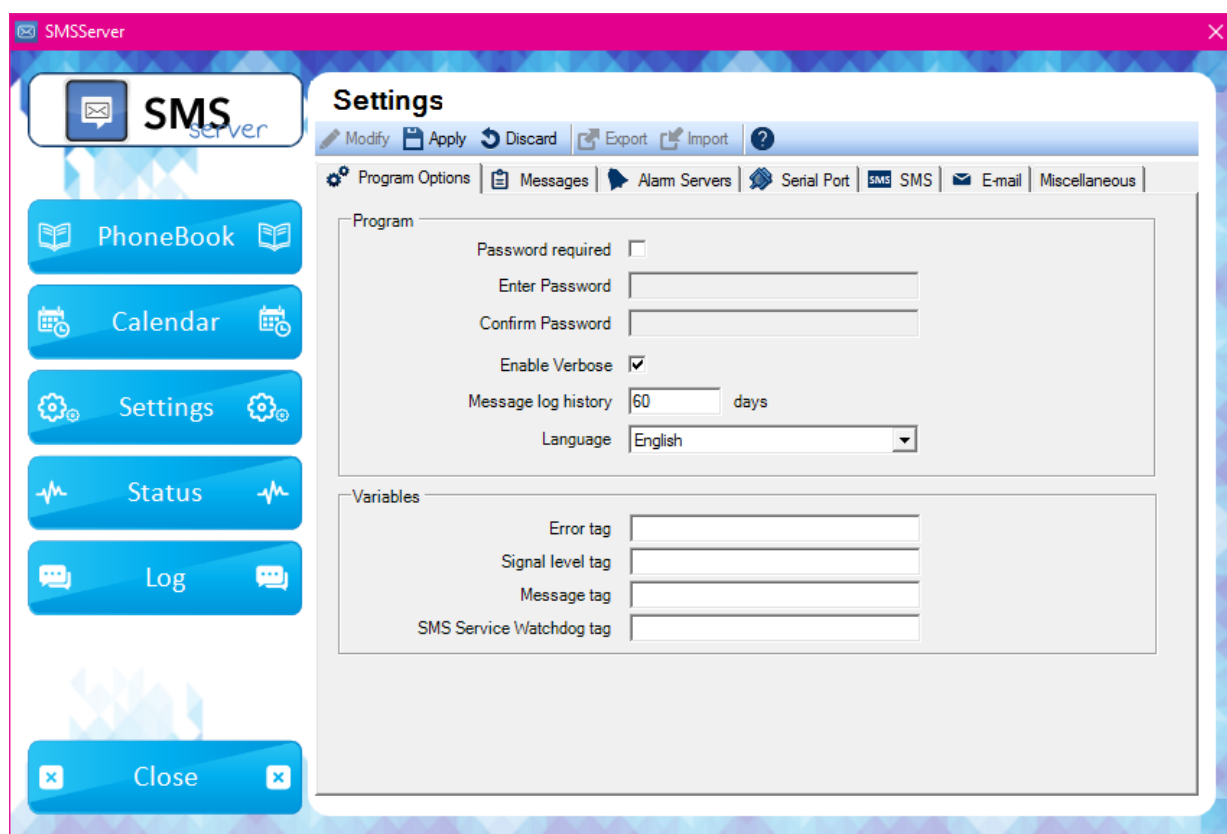
## 6 CONFIGURE SMSSERVER

With the modem connected and plugged in to the PC using the USB cable, you are three steps far from the complete configuration of your system.

Run SMSServer and select **Settings** tab. Click on **Modify** button in order to edit the settings explained hereafter.

### 6.1 ENABLE VERBOSE WINDOW

By enabling the verbose window, a new button will appear on the application. Verbose window will show main actions took by SMSServer. On the **Settings** → **Program options** tab, select the option **Enable Verbose**.

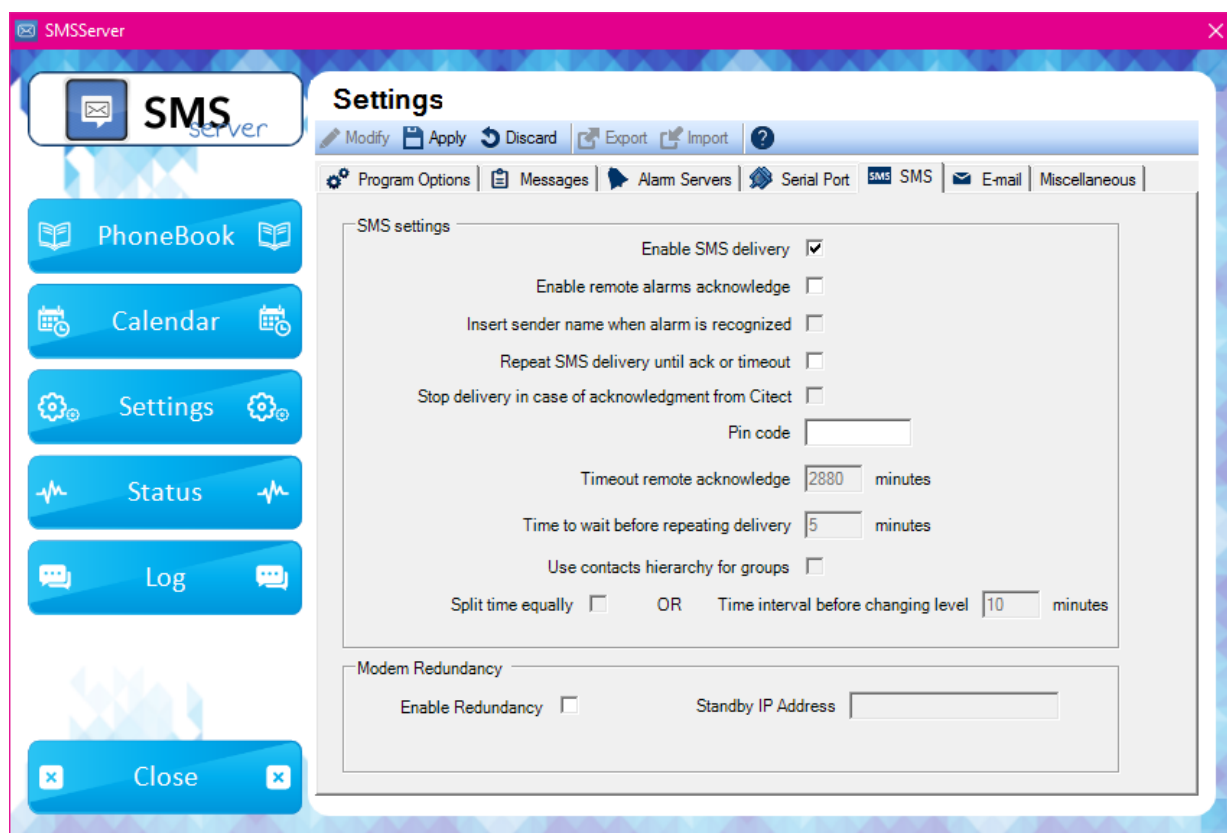


In case of modem connection, into Verbose window Customer can see all steps performed by SMSServer to connect to the modem. In case of errors, it will be possible to find some hints to solve problems.

Rev.	Date	Edited by	Approved by
05	02 Sep 2016	Leonardo Ortolani	Alessio Colombo

## 6.2 ENABLE SMS DELIVERY

For the next step, it is necessary to enable SMS delivery to use the Modem. On the **Settings** → **SMS** tab, select the first option (**Enable SMS delivery**).



Moreover, if the SIM card is protected by PIN code, insert it into the relevant text box (**Pin code**). This is a SIM card setting and does not depend on Modem.



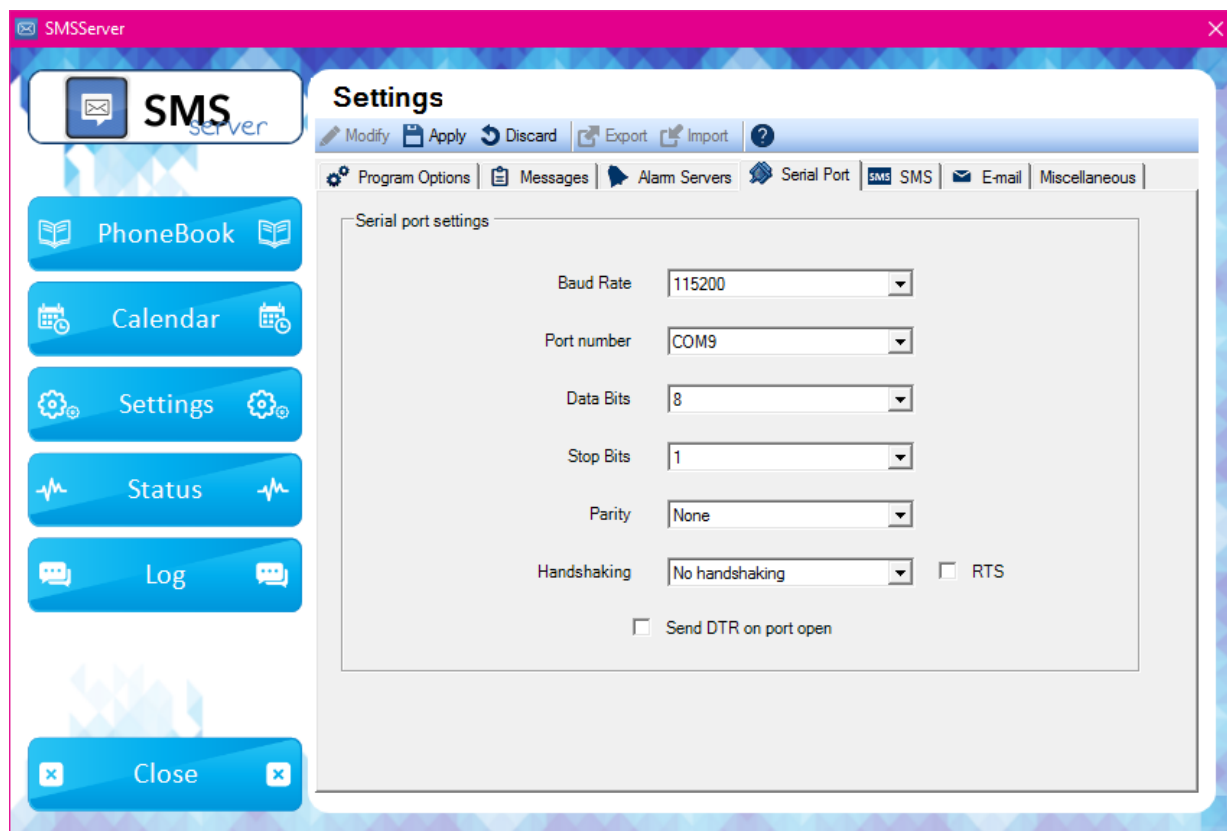
### CAUTION!

If you enter a wrong PIN Code, SIM card may be locked after several connection tries.

Rev.	Date	Edited by	Approved by
05	02 Sep 2016	Leonardo Ortolani	Alessio Colombo

### 6.3 SERIAL PORT SETTINGS – USING USB CABLE

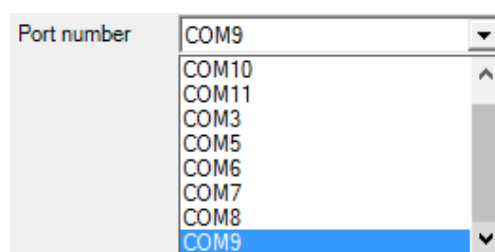
After SMS delivery has been enabled, it is necessary to configure the COM Port settings on the **Settings** → **Serial port** tab. All of the parameters has to be setted up as shown on the screenshot below *except for the port number settings*.



When the modem is connected to the PC using USB cable and then powered on, it creates seven different virtual COM ports and their number depends on the hardware of the PC where the modem is plugged.

On older Windows versions it can be necessary to install specific drivers, please refer to the chapter 3 for further informations.

On the shown example, Virtual COM Ports have numbers from 5 to 11.



**Not all of the COM ports will work with AT commands, normally the 1<sup>st</sup>, the 2<sup>nd</sup> and the last are reserved, so it is possible to use one between the remaining spare COM ports.**

Click on **Apply** button to save SMS and Serial Port Tab settings.

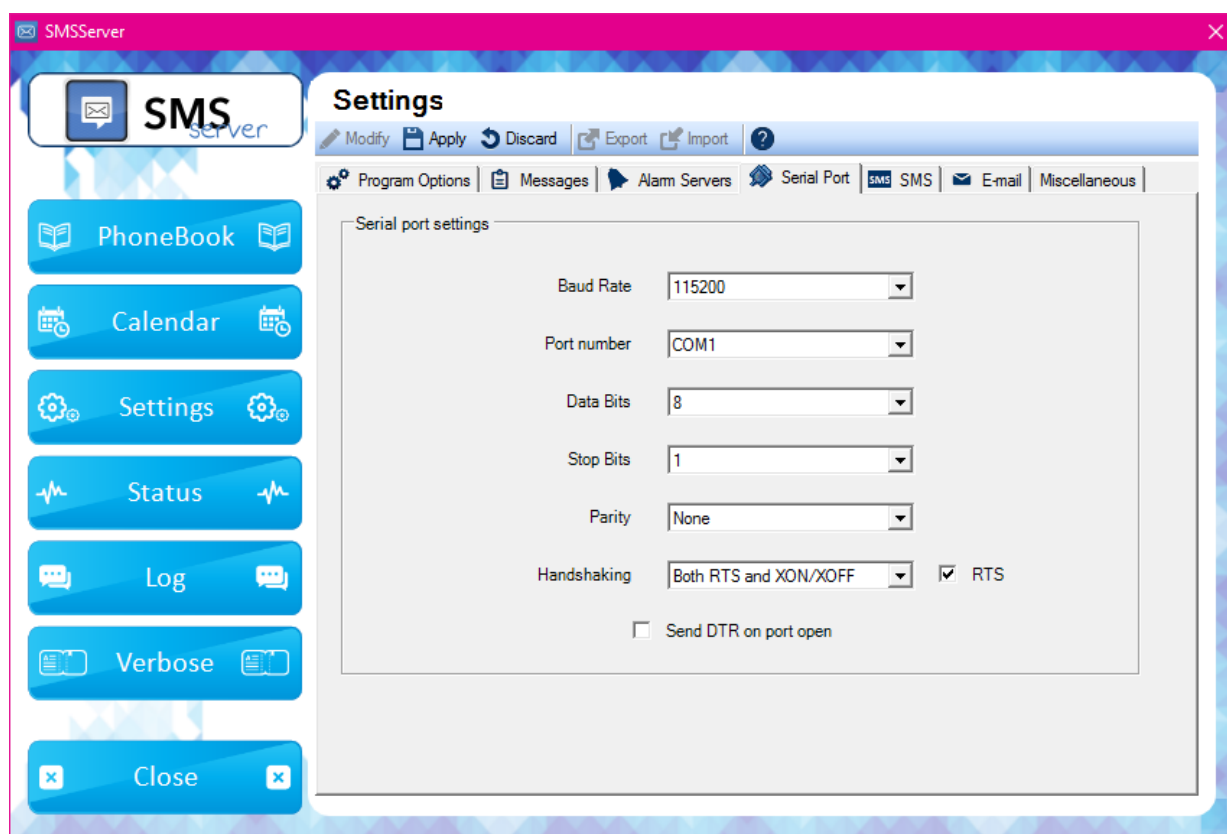
Rev.	Date	Edited by	Approved by
05	02 Sep 2016	Leonardo Ortolani	Alessio Colombo

## 6.4 SERIAL PORT SETTINGS – USING RS232 CABLE



**Serial Cable is not included in the package and has to be eventually purchased separately by the Customer.**

After SMS delivery has been enabled, it is necessary to configure the COM Port settings on the **Settings** → **Serial port** tab. All of the parameters has to be setted up as shown on the screenshot below **except for the port number settings**.



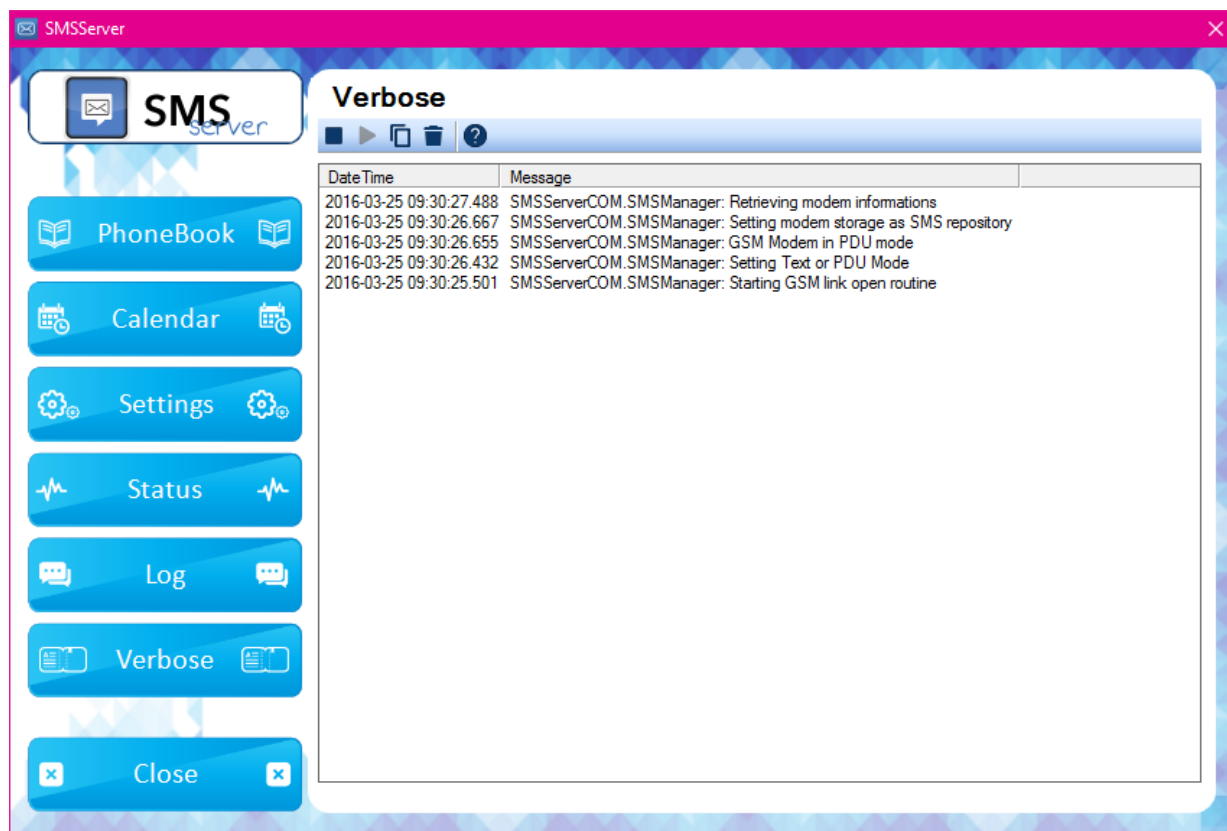
Port Number has to be chosen between the one installed on the PC. In case there are several ports, check the number of the one connected to the modem.

Click on **Apply** button to save **SMS** and **Serial Port** Tab settings.

Rev.	Date	Edited by	Approved by
05	02 Sep 2016	Leonardo Ortolani	Alessio Colombo

## 6.5 CHECK MODEM STATUS

To check modem status, click on the **Verbose** button in order to see actions taken by SMSServer. If modem is correctly connected to the selected COM Port, Verbose window should contain following informations:



If informations are similar to this, SMSServer is correctly connected to the modem. Click on **Status** button, it will appear a window where it is possible to find some informations about modem type and connection status, **under the SMS Section**.

After you completed settings, SMSServer will take some seconds to start communication with modem, so if details are not immediately as follows please wait some seconds.

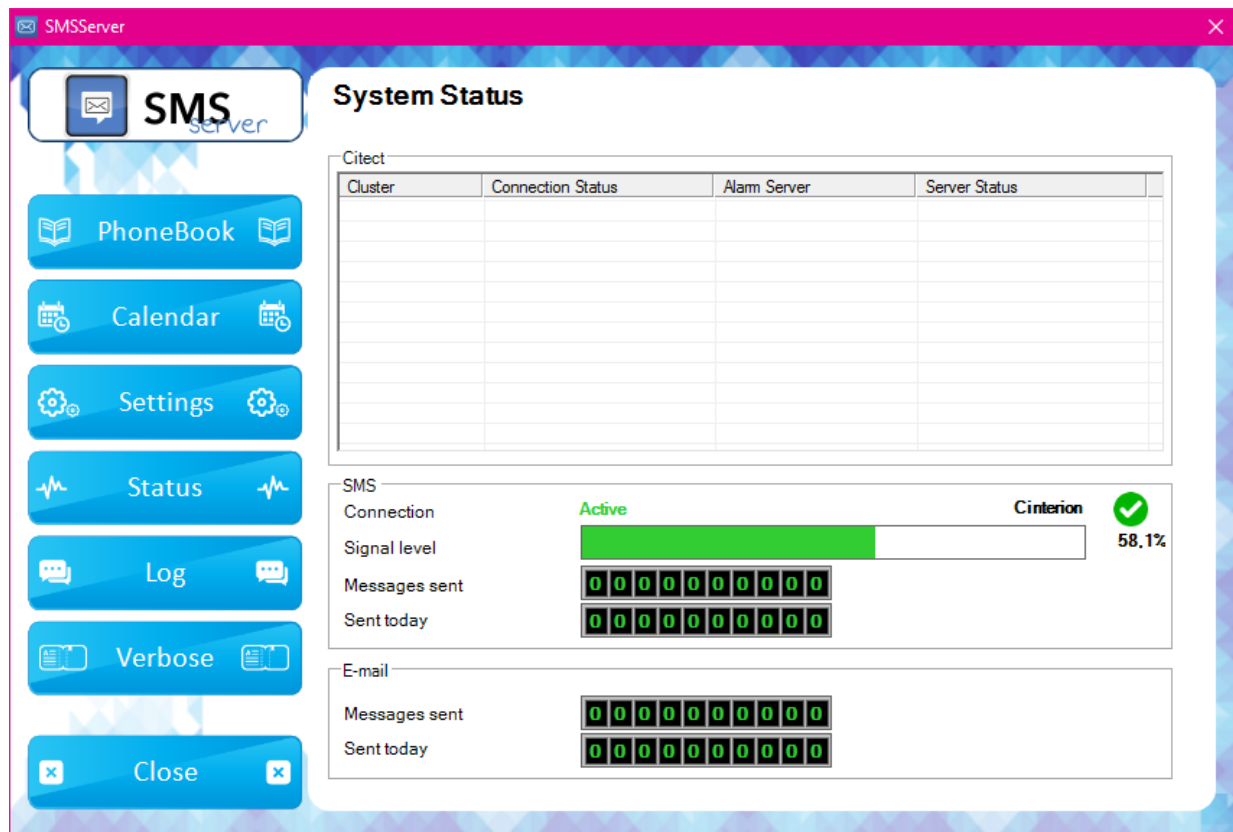


**In case of USB cable connection, not all of the COM ports will work with AT commands, so in case SMSServer cannot communicate with modem please try another COM port.**

**In case of RS232 cable connection, check that the selected port is the one connected to the modem.**

Rev.	Date	Edited by	Approved by
05	02 Sep 2016	Leonardo Ortolani	Alessio Colombo

In case all of the configurations was correct, system status window should be something like follows:



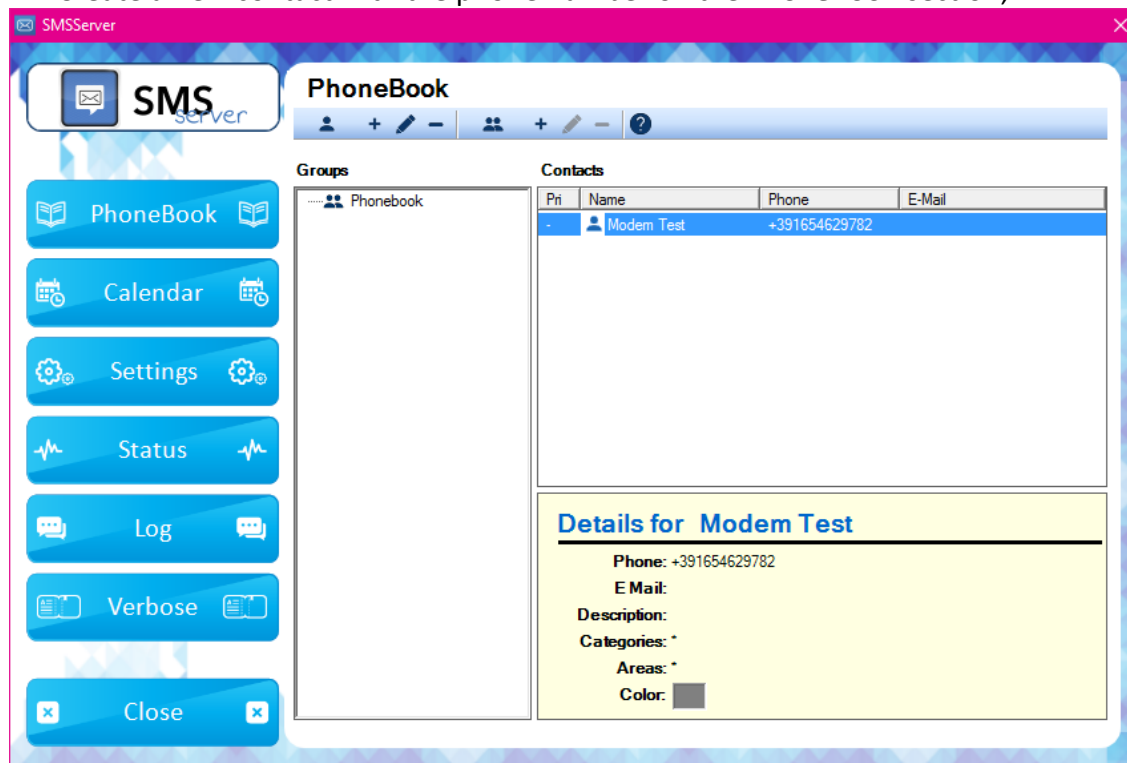
Rev.	Date	Edited by	Approved by
05	02 Sep 2016	Leonardo Ortolani	Alessio Colombo



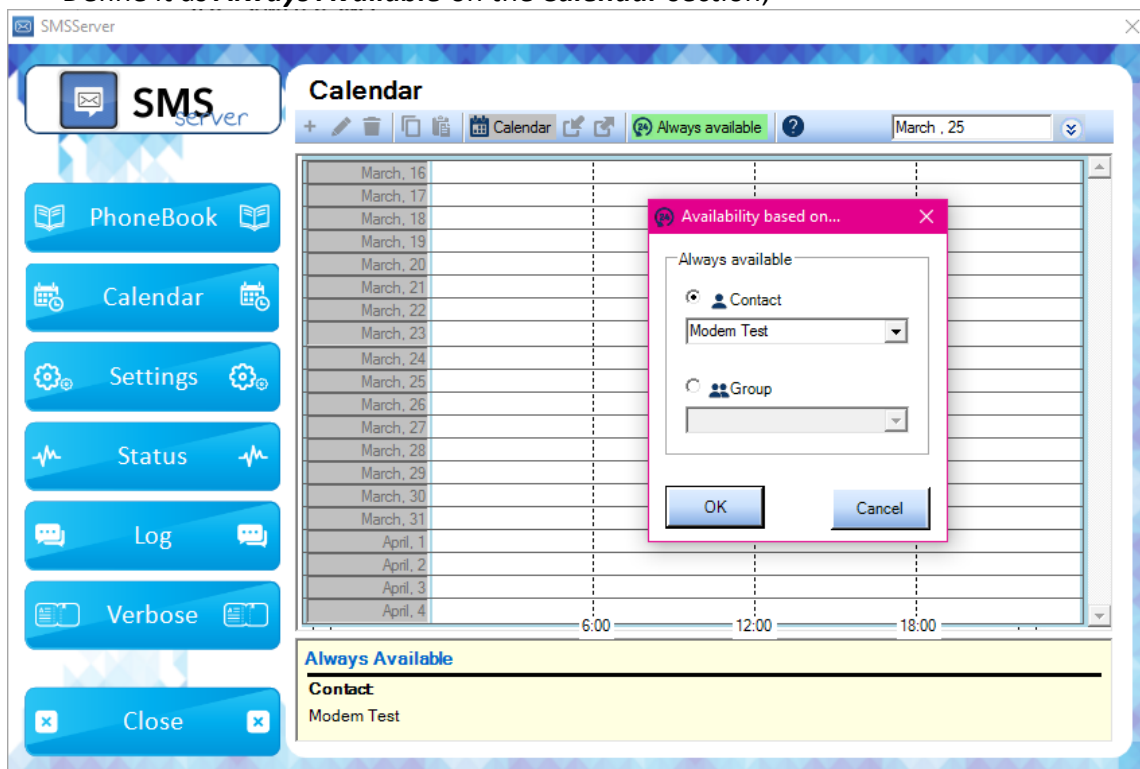
## 6.6 SEND TEST SMS

To send a test SMS there are some steps to perform:

- Create a new contact with the phone number on the **PhoneBook** section;

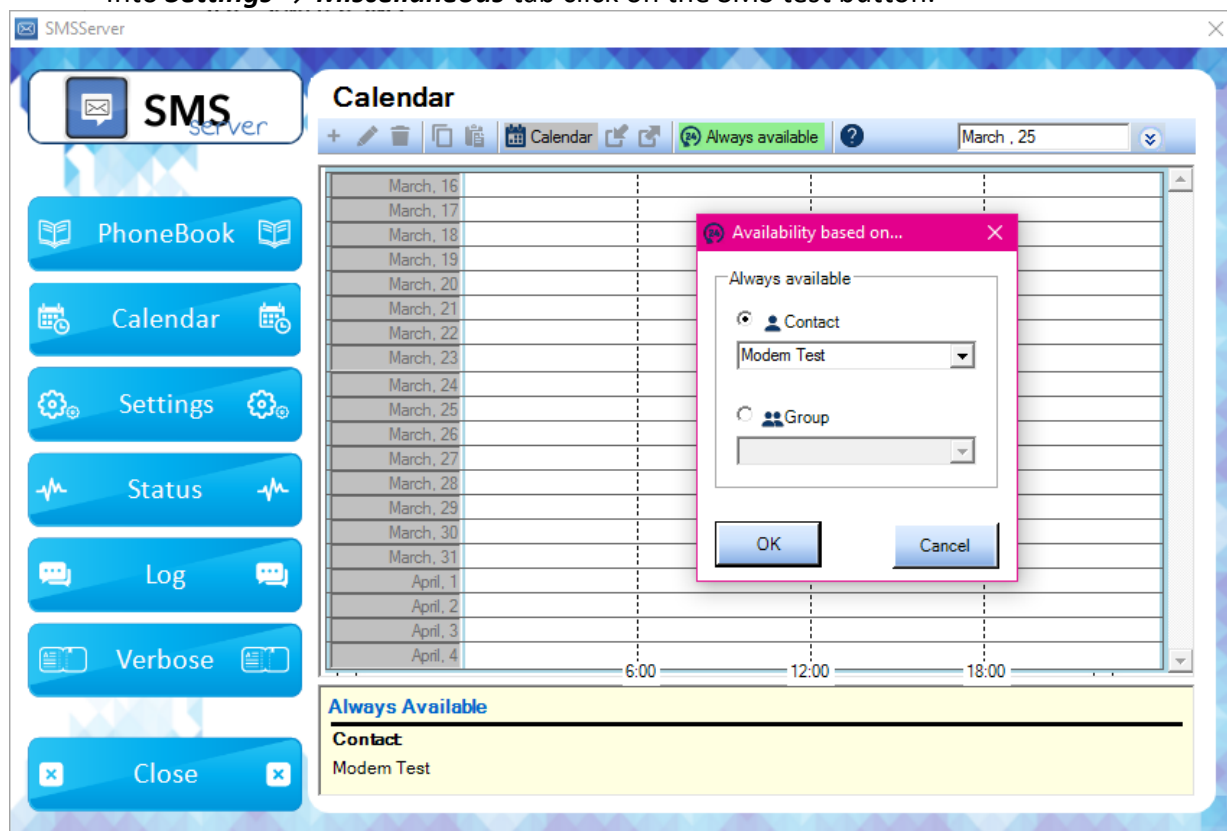


- Define it as **Always Available** on the **Calendar** section;



Rev.	Date	Edited by	Approved by
05	02 Sep 2016	Leonardo Ortolani	Alessio Colombo

- Into **Settings** → **Miscellaneous** tab click on the SMS test button.



If everything works as expected the available person should receive the message in some seconds. Verbose and log windows will show the operations results.

## Verbose

DataOra	Messaggio
2016-03-25 07:59:55.946	SMSServerCOM.SMSManager: Message Sent: SMSServer: SMS test message To:
2016-03-25 07:59:55.726	SendSMS: AT+CMGS=38
2016-03-25 07:59:55.692	SMSServerCOM.SMSManager: Sending SMS to Modem Test: SMSServer: SMS test message

## Message Log

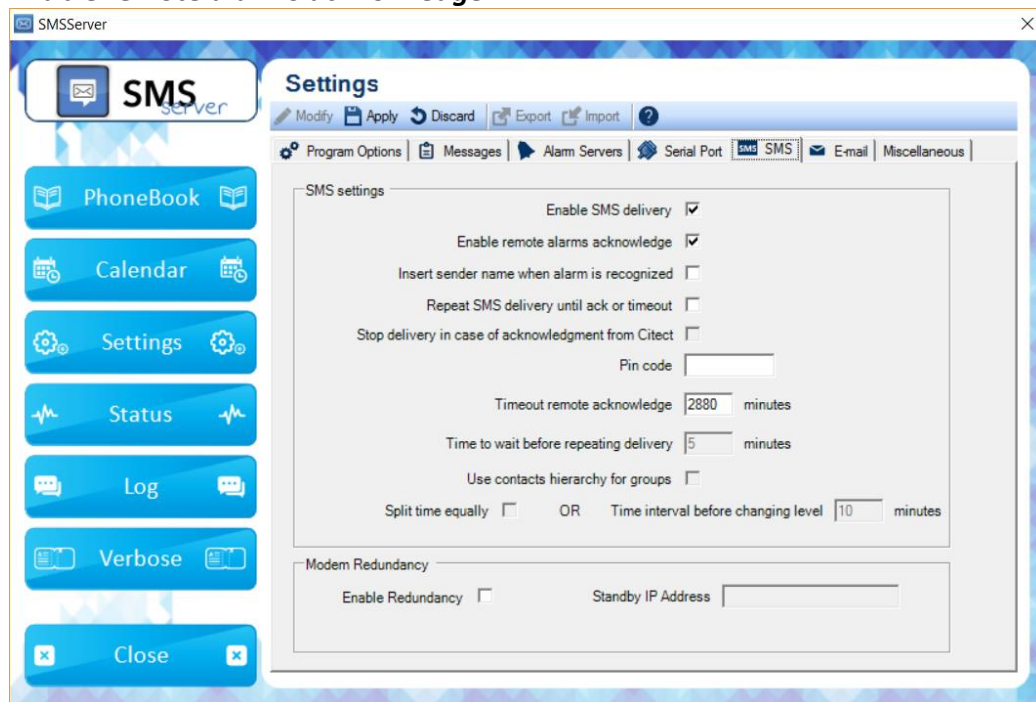
Type	Body	Receiver	Retry	Date
SMS	SMSServer: SMS test message	Modem Test (+39...	0	3/25/2016 9:40:34 AM

If something has gone wrong, check the connection status and/or refer to SMSServer manual.

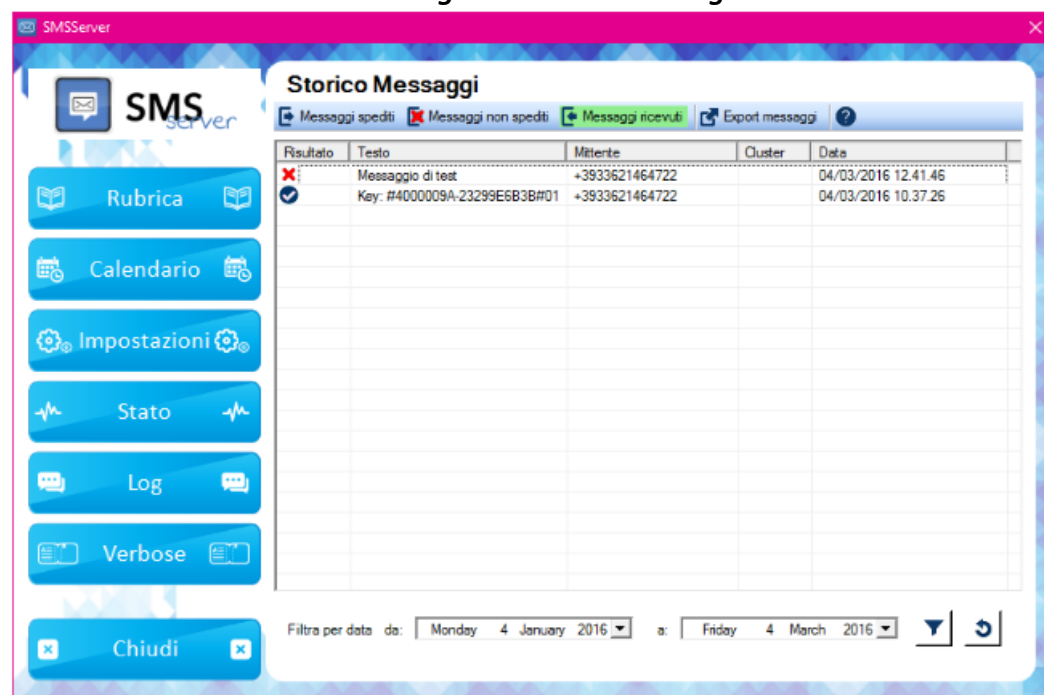
Rev.	Date	Edited by	Approved by
05	02 Sep 2016	Leonardo Ortolani	Alessio Colombo

## 6.7 RECEIVE TEST SMS

To qualified the system to receive SMS: go to **Settings** → **Modify SMS** and check the voice **Enable remote alarms acknowledge**



All received SMS are shown in **Log** → **Received messages**:



: the message is received but is not understandable from the system;



: the message is received and the SMSServer can read the reference alarm.

Rev.	Date	Edited by	Approved by
05	02 Sep 2016	Leonardo Ortolani	Alessio Colombo

## 7 IN CASE OF PROBLEMS

SMSServer support staff is available Mon/Fri from 8:00 AM to 5:00 PM GMT+1:00.

In case of problems or doubts, contact us: [support@smsserverweb.com](mailto:support@smsserverweb.com).

---

Rev.	Date	Edited by	Approved by
05	02 Sep 2016	Leonardo Ortolani	Alessio Colombo